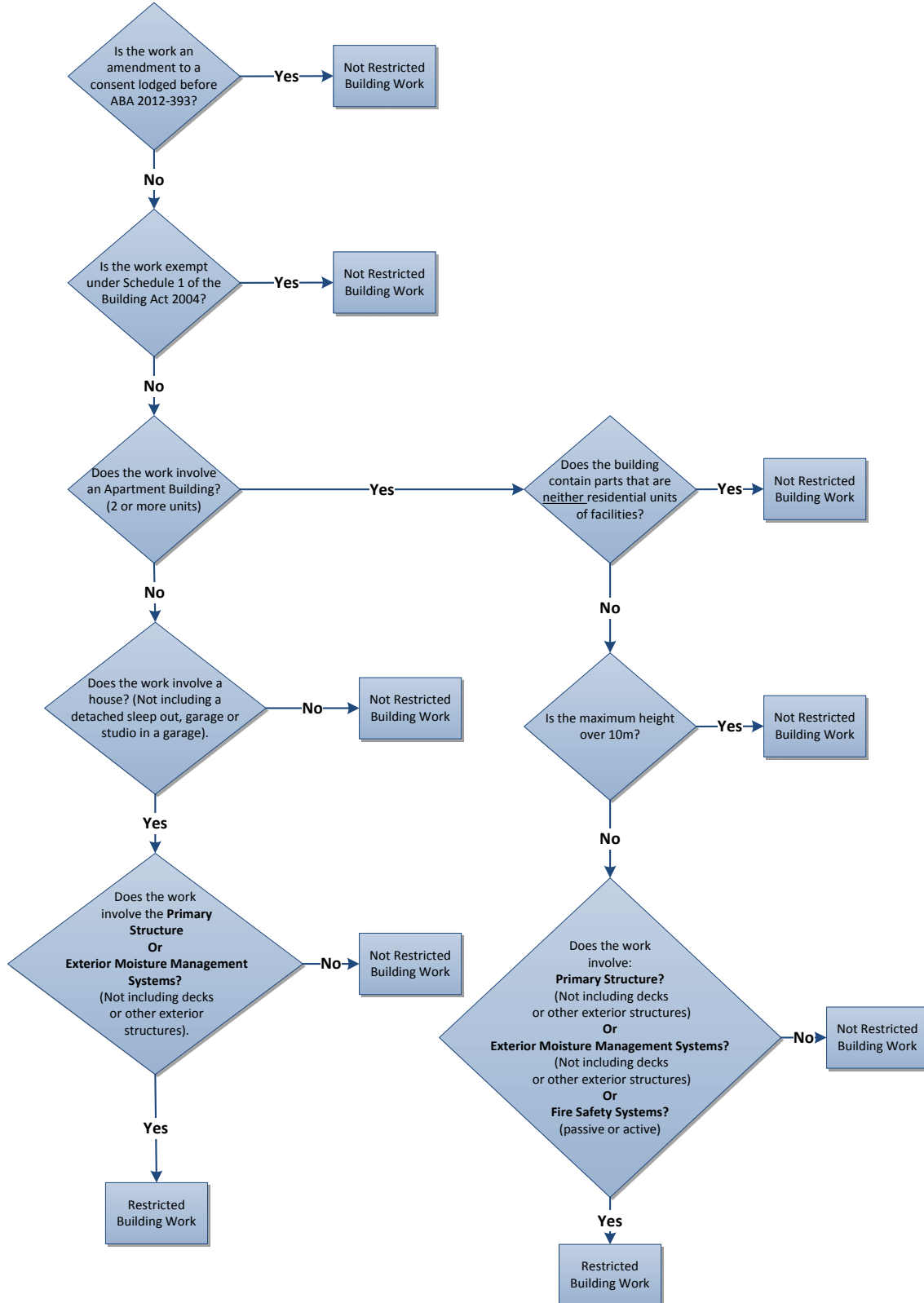


Restricted Building Work Flow Chart
(see definitions over page)



Definitions

Restricted Building Work is:

The construction or alteration of –

- a. the primary structure of a house or small to medium apartment building; or
- b. the external moisture management system of a house or small to medium apartment building.

A House means:

A free standing fully detached building consisting of a single residential unit, (or a single residential unit and one or more residential facilities).

Small to Medium Apartment means a building that:

- a. contains 2 or more residential units or residential facilities; and
- b. does not contain certain parts that are neither residential units or residential facilities,
- c. has a maximum calculated height of less than 10 metres.

Maximum calculated height means the vertical distance between the highest point of its roof (excluding aerials, chimneys, flagpoles and vents) and the lowest point of the ground.